

Dolan/Maxwell

# New Frequencies

*exploring possibilities in paint*



Cheryl Warrick





*Go Slowly* 2017 acrylic, collage & graphite, image/sheet 22 x 30"

front cover image:

*From the Inside* 2019 monotype with acrylic & collage, image/sheet: 31 1/2 x 48

back cover images, left to right:

*Point of View 3, Pathway 2, In Between*

*Lean In, Between the Lines, Pathway 1*

*New Road, Grounded, Echo*

all painted in 2019, acrylic on paper, each image/sheet 12 x 9"

All works included herein are signed, titled & dated by the artist, verso



*Current 1 & 2* 2017 acrylic & pastel, diptych, each image/sheet 30 x 22"

In collaboration with Dolan/Maxwell, The Delaware Contemporary presents *New Frequencies: Exploring Possibilities in Paint*, a 2020 solo exhibition of recent paintings by Cheryl Warrick.

In this significant museum exhibition, Warrick applies a complex mix of methods of abstraction to create layered, mixed media works that weave personal and collective symbolism together. Through swatches of vibrant paint emerge lines that lead the viewer through recognizable imagery hidden amongst the interlocking marks on the surface. These concealed, often domestic, symbols invite viewers to piece together the tatters of an unfolding narrative while examining the role of their own individual associations to the color and form.

Warrick intends to draw the viewer into each work to encourage the creation of individual narratives with potentially transformative powers.



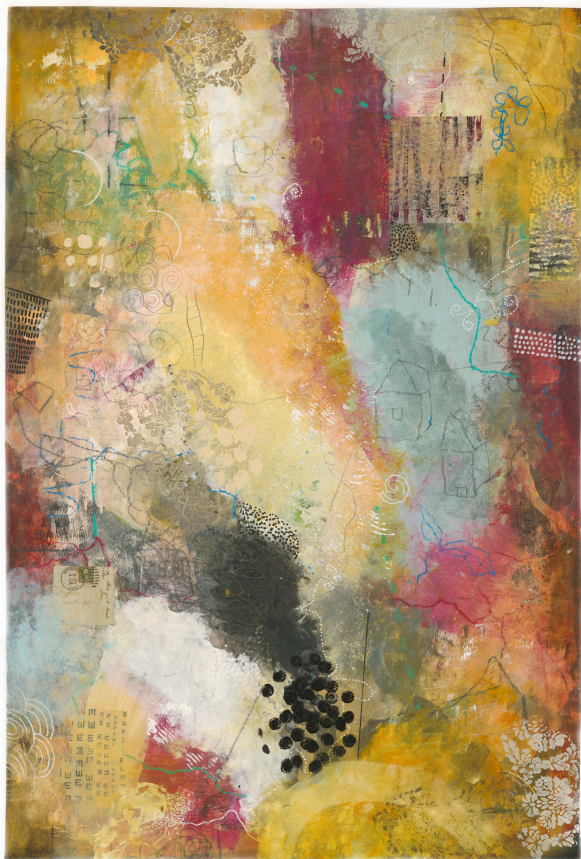


*Working Theories* 2018 acrylic & graphite, diptych image/sheet 31 x 45"



*Voyager* 2017 acrylic, crayon & graphite, image/sheet 44 x 30"





*Cascade* 2017 acrylic, graphite & collage, image/sheet 44 x 30"



*Calculate 2* 2018 acrylic & graphite, image/sheet 31 x 22 1/2"





*Affirmation* 2018 acrylic & graphite, image/sheet 44 x 60"





*Frequency* 2018 acrylic, pastel & collage; diptych 31 x 45"



*Quantum Leap* 2018 acrylic, graphite, pastel & collage, image/sheet 30 x 22 1/2"





*Inside/Outside* 2018 acrylic, graphite, pastel, diptych, 48 x 63"





*Anchored* 2019 collage with monotype & acrylic, image/sheet 30 7/8 x 22 3/8"



*Frequency I* 2019 collage with monotype & acrylic, image/sheet 30 7/8 x 22 3/8"





*Frequency II* 2019 collage with monotype & acrylic, image/sheet 30 7/8 x 22 3/8"



*Frequency III* 2019, collage with monotype & acrylic, image/sheet 30 7/8 x 22 3/8"





*Alchemy*, 1, 2, 3, & 4 2019 acrylic, each image/sheet c. 15 3/4 x 22 1/4"



*Memento I* 2019 acrylic on paper, image/sheet 31 1/4 x 48"



Born in 1956, in St. Albans, NY, Cheryl Warrick received a BFA in Painting at the Massachusetts College of Art, Boston. Her works are included in numerous public collections, including the Cleveland Museum of Art, Ballinglen Museum of Contemporary Art, Detroit Art Institute, Art Institute of Chicago, Boston Public Library, Museum of Fine Arts, Boston, Memorial Art Gallery, Community College of Philadelphia, Columbia University, Pennsylvania Academy of Fine Arts, Free Library of Philadelphia; Rhode Island School of Design Museum of Art, Rose Art Museum, Smith College Museum of Art, Johnson Museum of Art, Fleming Museum of Art, and the Palmer Museum of Art.

Cheryl Warrick is represented by Dolan/Maxwell





*Intersection* 2019 acrylic, pastel & graphite, diptych image/sheet 31 3/4 x 96"



*Lean In* 2019 acrylic, graphite, pastel & collage, image/sheet 22 x 30"

My paintings are a mixed media exploration of layers, inner landscapes, language and archetypes. I incorporate bits of found paper, text, and symbols in abstract, painterly fields as a way to explore how we see and know the world around us.

Some layers are obscured and harder to see. These layers and marks reveal themselves over time. From a distance you see and feel one thing and as you move in closer, more is revealed. There is a visual dance that happens as you begin to see something new in the work.

My intention is that the viewer will continue to quietly discover within each piece, a new vantage point, new relationships and meaning.

Cheryl Warrick



*Correlation* 2019 acrylic, graphite, pastel & collage, diptych, image/sheet 22 1/2 x 62"



*Improvisation* 2019 acrylic, graphite, pastel & collage, diptych, image/sheet 22 1/2 x 60"





*Time Stamp* 2010-19 acrylic, graphite & collage image/sheet 30 x 22 1/2"



*Remix 2* 2019 acrylic, graphite & pastel, image/sheet 30 x 22"



*Possibility* 2019 acrylic, pastel & graphite, image/sheet 31 x 22 1/2"



*Rise & Fall* 2019 acrylic, pastel & graphite, image/sheet 30 x 22 1/2"





# Dolan/Maxwell

2046 Rittenhouse Square Philadelphia Pennsylvania 19193 USA  
[www.DolanMaxwell.com](http://www.DolanMaxwell.com) 215,732.7787

Ron Rumford Margo Dolan Jon Eckel